

Advanced · TV™ Series



AV4004™ ATSC VIDEO ENCODER

OFFERING INDUSTRY-LEADING BROADCAST SOLUTIONS – EMPOWERING BROADCASTERS TO DO MORE WITH LESS



FAST FORWARD TO DIGITAL WITH LINEAR PERFORMANCE

The LINEAR AV4004™ Multi-Channel Video Encoder with Multiplexer was designed to provide a cost effective means to enable a TV station to convert multiple video and audio feeds into a single digital ASI stream for ATSC broadcast. The encoder can process four standard definition channels (NTSC or Digital) with stereo audio.

The AV4004 encoder is easily configured via Ethernet using a standard web browser. The AV4004 has a static PSIP application that allows you to begin operation quickly. It also has a built-in video switch for other custom applications such as EAS (Emergency Alert System).

Not just digital. Better digital.™

Contact us today for more information.

AV4001 ATSC Multi-channel Video Encoder



Features

▲ Live Preview*

The AV4004 Multi-Channel Video Encoder provides live preview of all channels in the mode selected. Live preview is always enabled - no additional configuration is necessary. Post-processed video and channel specific information is displayed, including Video/Audio PIDs, Video Source (Analog/Digital), Audio stream (AC-3/None), Video Format, and current Video bit rate.

*Live preview requires an external monitor or TV that is equipped with a DVI input port and must be capable of 1280x720 resolution or higher.

▲ Visual Status Indicators (LED)

The condition of the Encoder is displayed on the front panel via a LED. When the light is green the unit is powered on and the encoder is operational. If the LED displays red then an over temperature condition has occurred and the encoder will shut down.

▲ Configuration Interface

The AV4004 is easily configured using a standard web browser. Below is a sample page from the configuration interface.

▲ PSIP

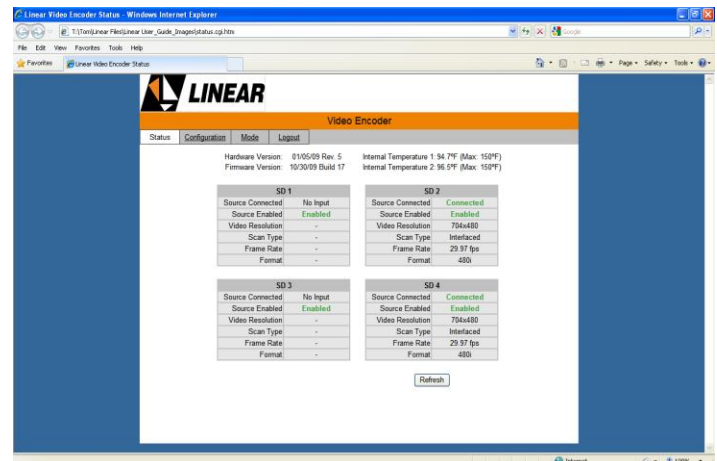
The AV4004 Multi Channel Video Encoder and Mux has static PSIP capability built in. Included is an application for generating a PSIP table and converting it to a file. This file can then be uploaded to the AV4004. Update the PSIP table as frequently as needed.

▲ Video Switch (EAS)

The encoder comes enabled with an internal video switch that can be used to provide one channel to any or all video and audio channels. You can use your current single channel Emergency Alert System equipment to broadcast to all channels simultaneously.

TECHNICAL SPECIFICATIONS

POWER INPUT
115V/230V AC, 60Hz/50Hz, 184 Watts
Fuse: 250V, 3.0A, Slow-blow (Note: Replace only with same fuse type and rating)
INPUTS
Four Analog NTSC Video Inputs via BNC connectors with Four Analog Audio Inputs (L/R, +4dBu) via Removable Screw Terminal connectors
Four Digital SD-SDI Video Inputs via BNC connectors with digital audio
OUTPUTS
One ASI Output: BNC connector
10/100 Ethernet for web page access
DVI-D connector for Live Preview of all configurations
One ASI Input (Factory use only)
ENVIRONMENTAL
Operating temperature: 0 C (32 F) to 50 C (122 F) ambient
Storage temperature: -30 C (-22 F) to 80 C (176 F)
Powered Unit Thermal Shutdown 65 C (~150 F)
Humidity, operating and storage: 95% non-condensing



Linear Industries, Inc. 2531 Technology Dr., Suite 310 Elgin, IL 60124 1.847.428.5793 www.linear-tv.com